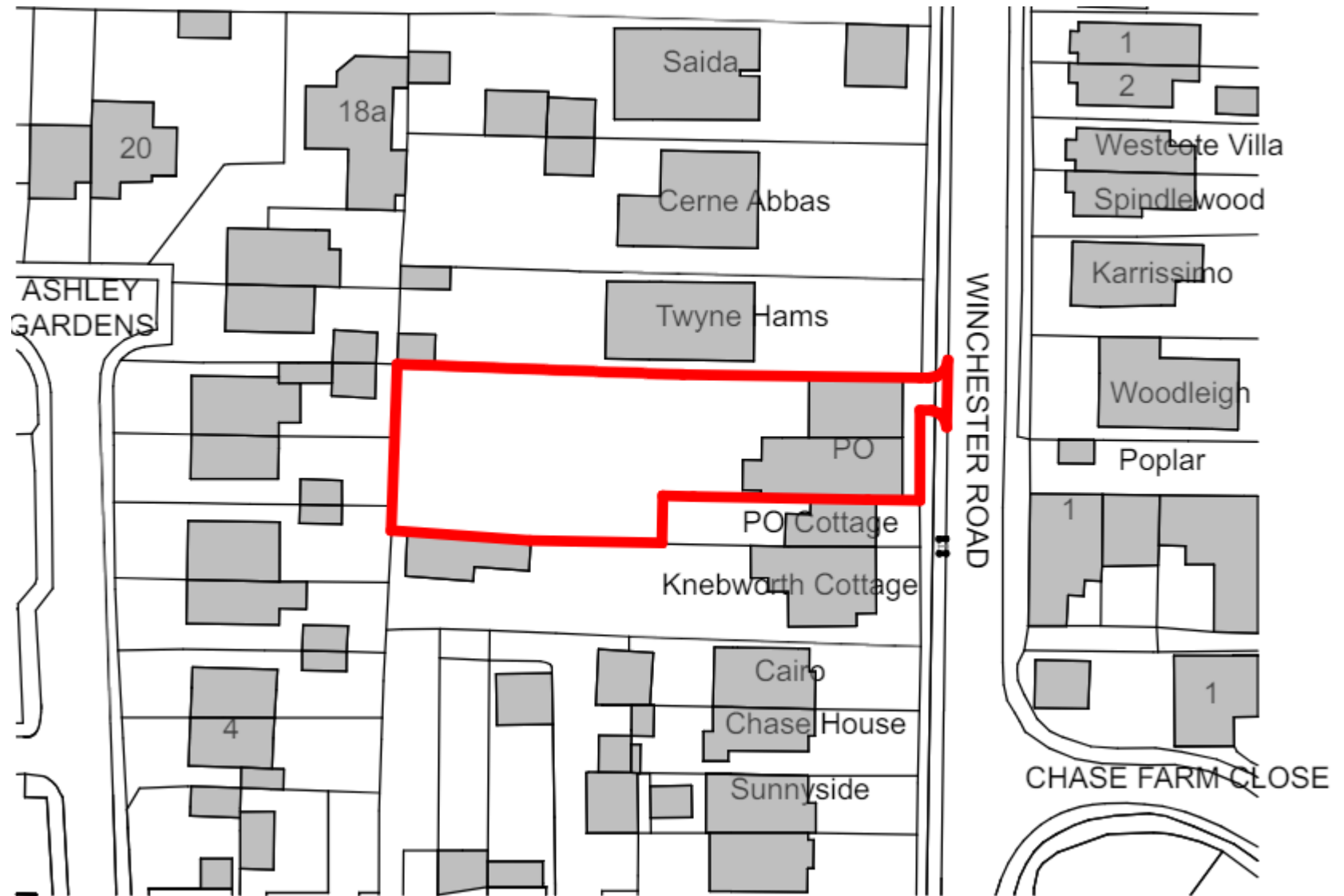


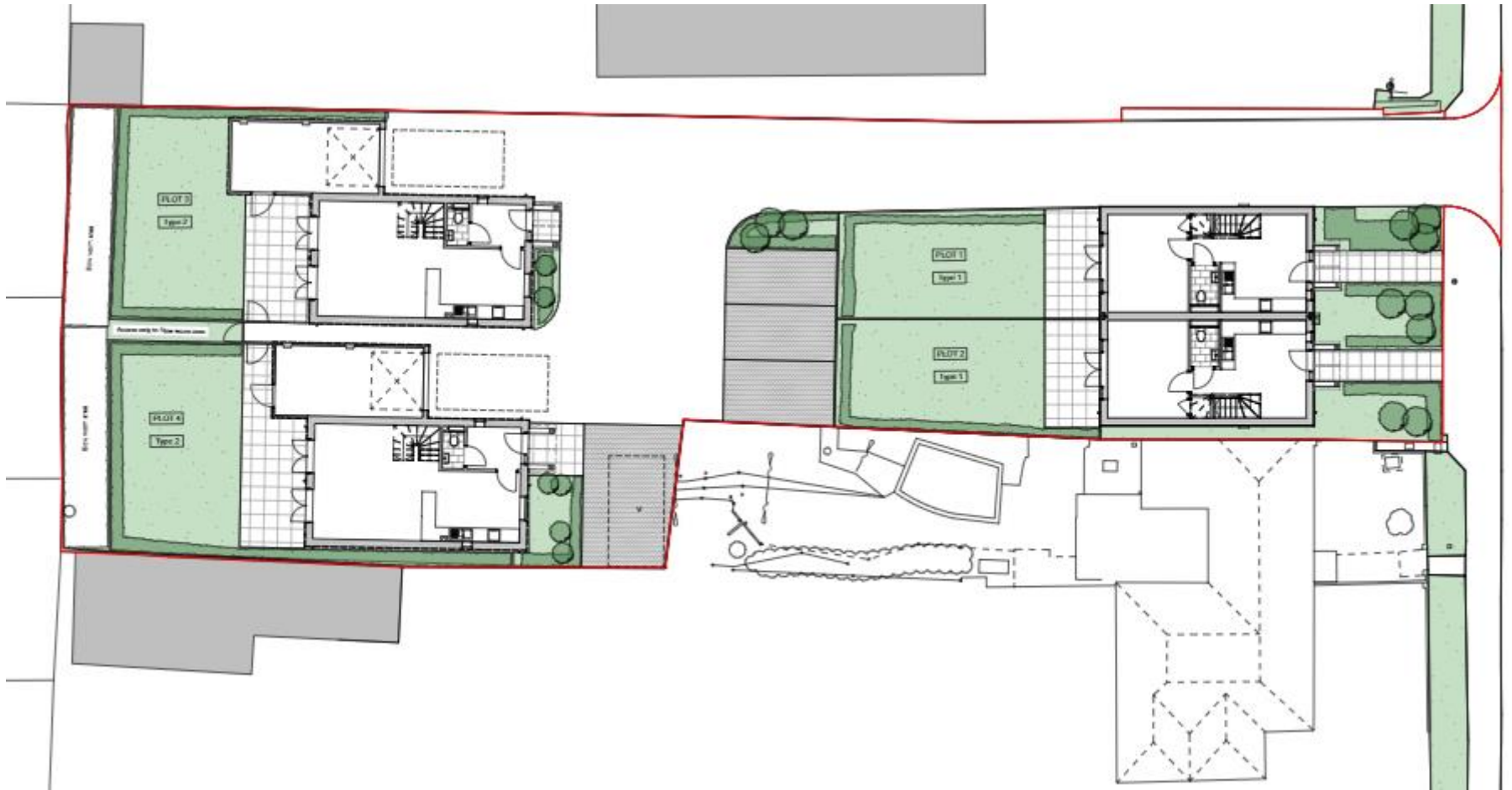
23/02061/FUL
Post Office, Winchester Road, Waltham Chase
Hampshire

Demolition of existing buildings and erection of four dwellings, together with access, parking, and associated works

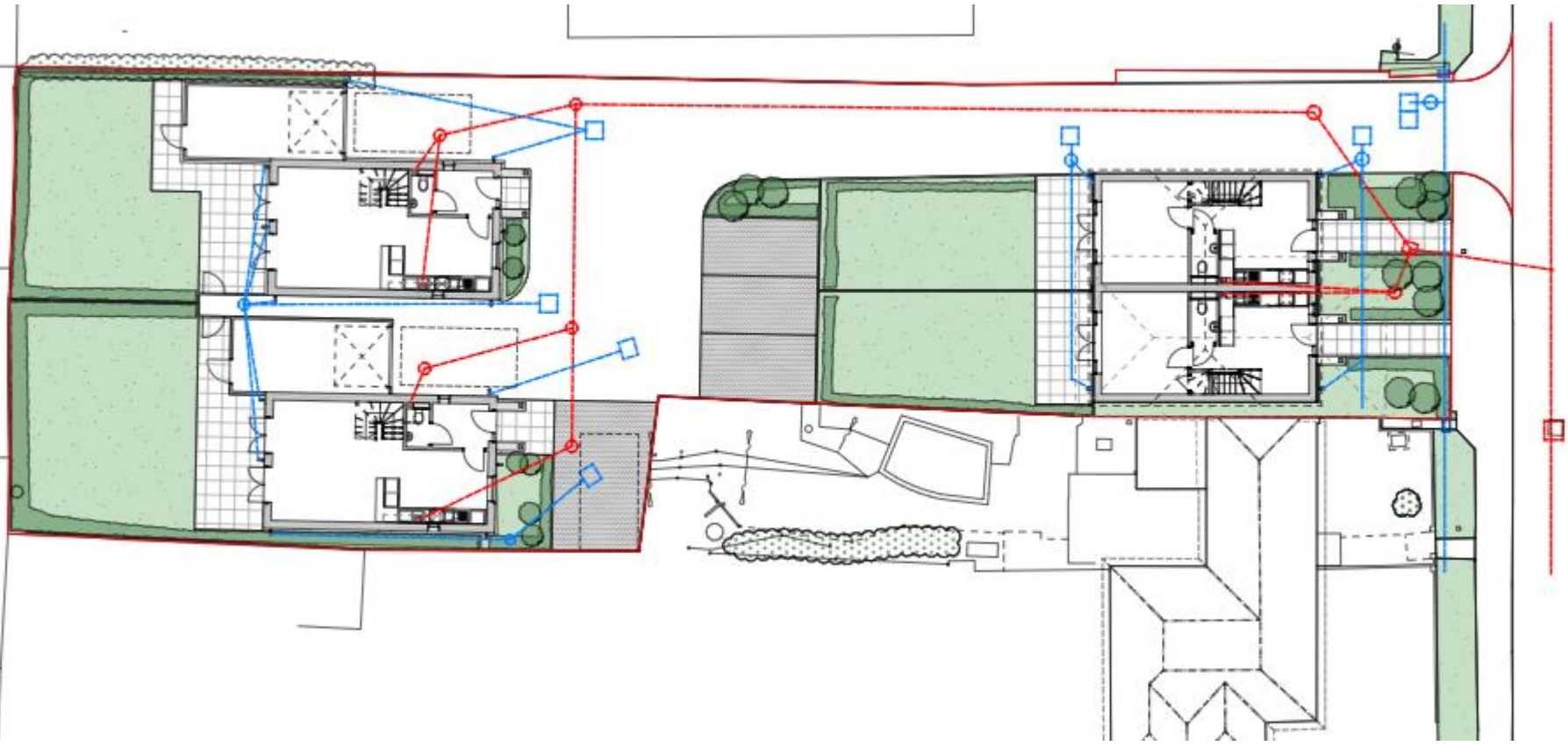








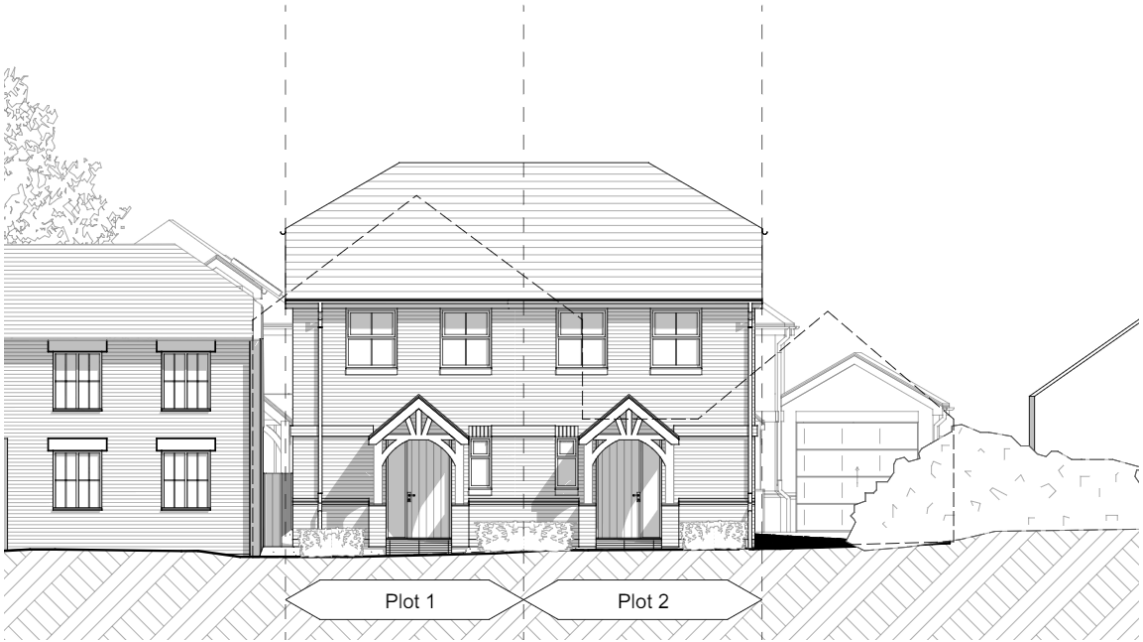
Proposed Site Plan



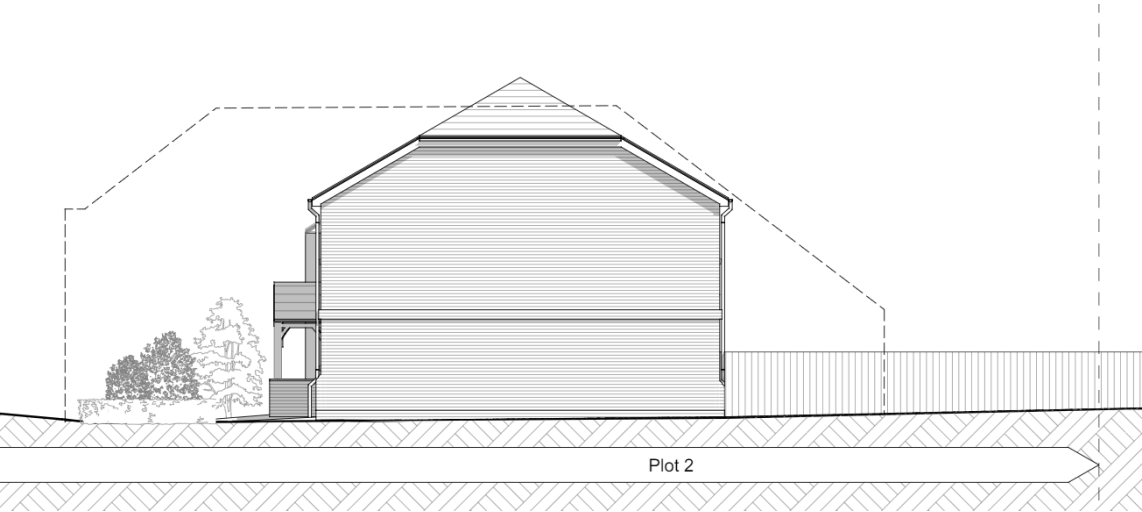
Proposed Drainage Plan

Plots 1 and 2

Front elevation



Side elevation

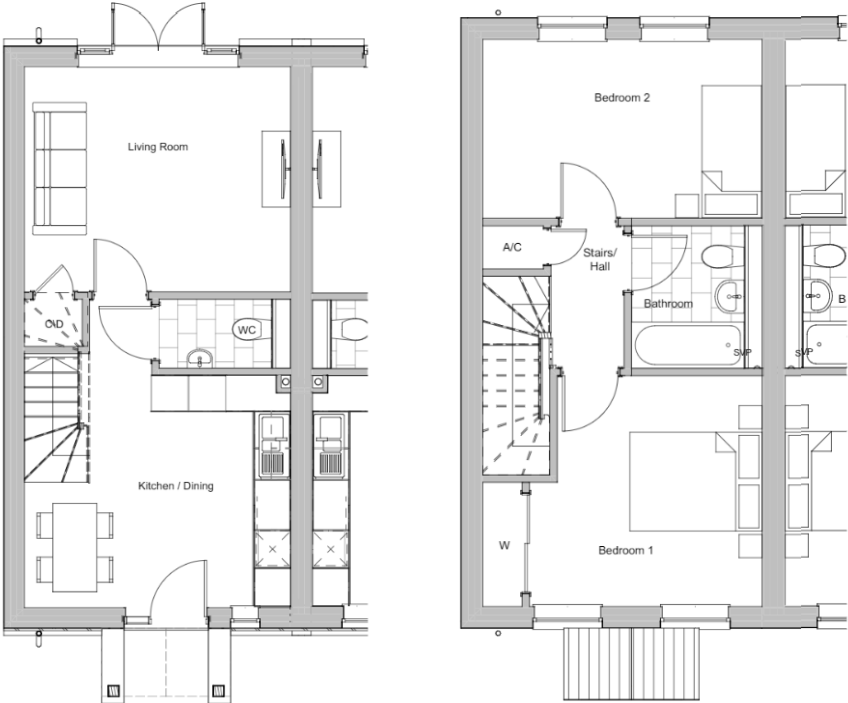


Plots 1 and 2

Rear elevations



PLOT 1-2 - WEST ELEVATION

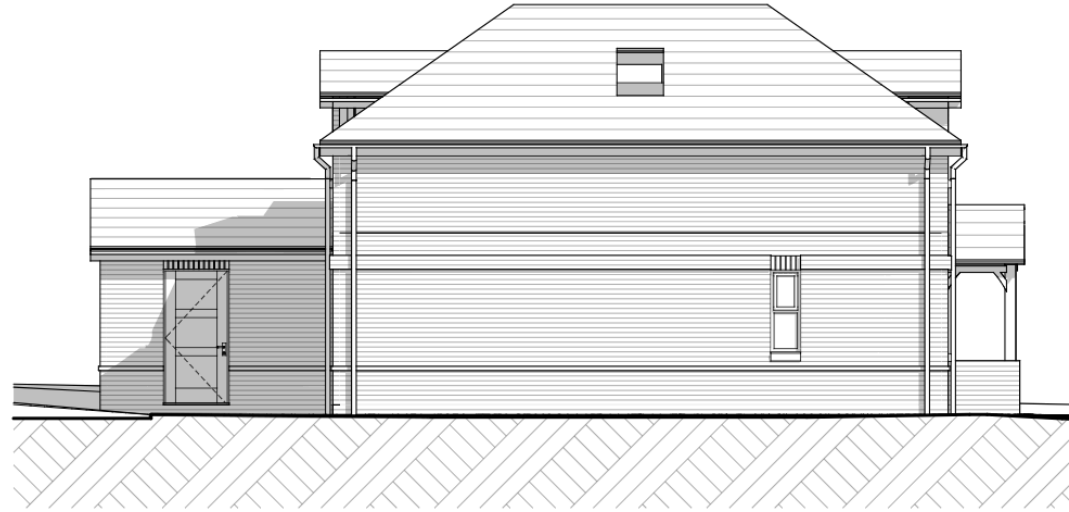


Floor Plans

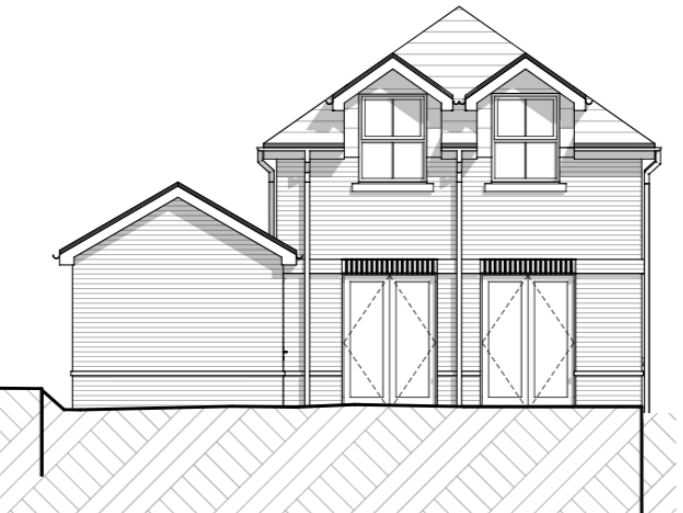
Plot 3 elevations



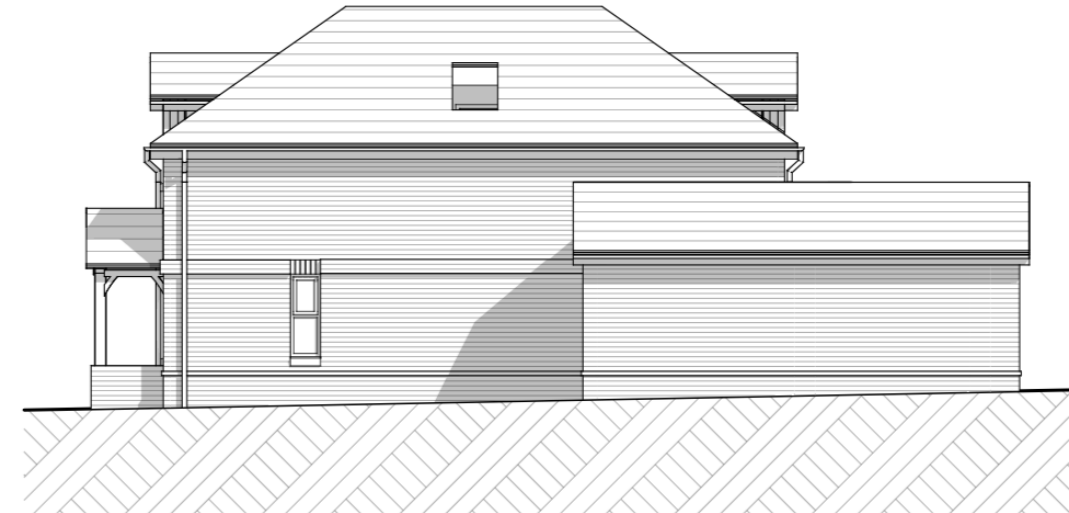
House Type 2 - EAST ELEVATION



House Type 2 - SOUTH ELEVATION

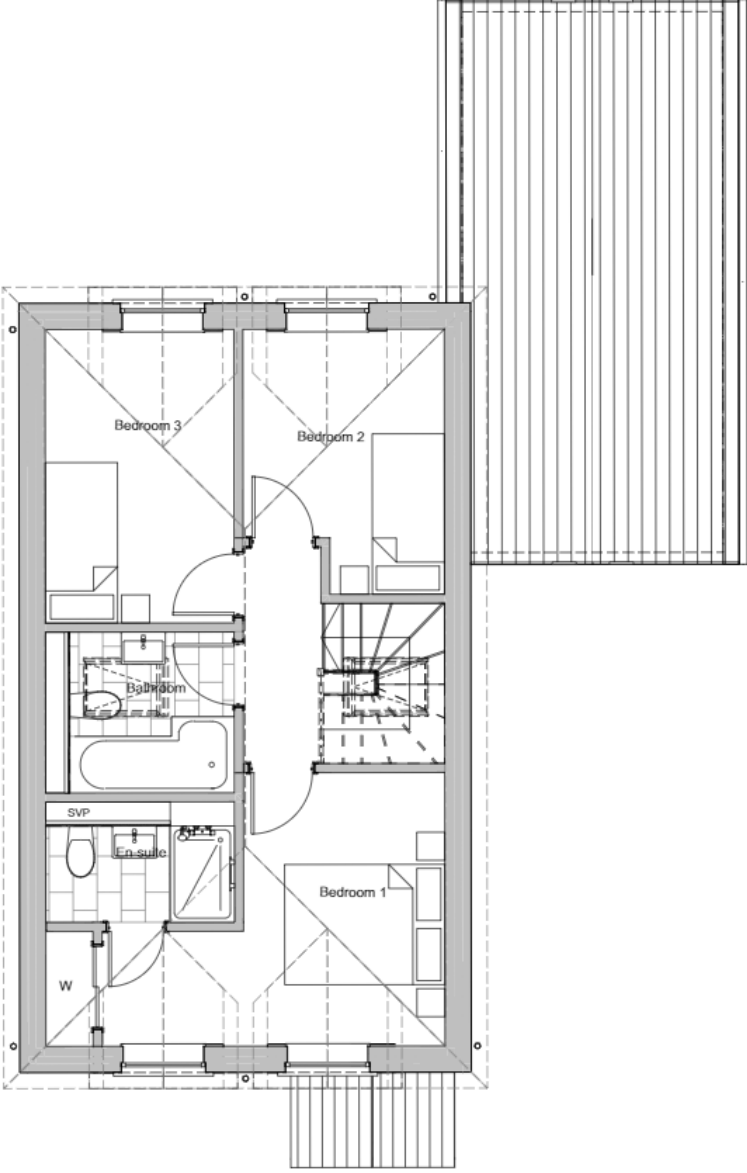
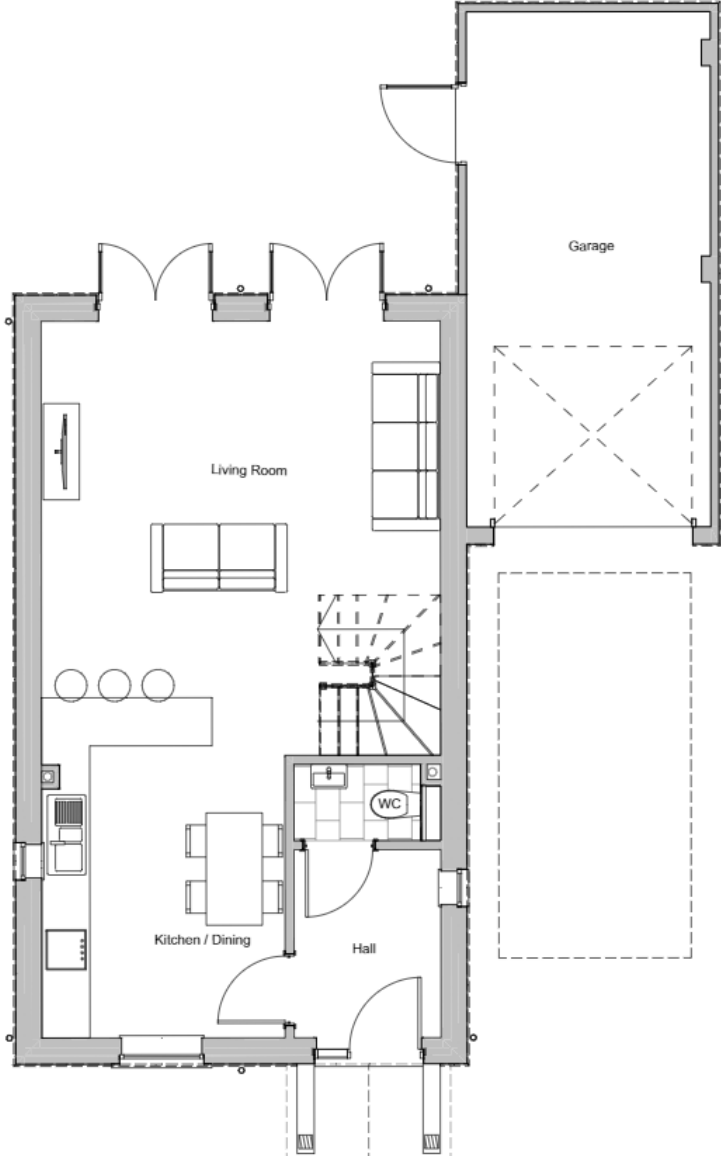


House Type 2 - WEST ELEVATION

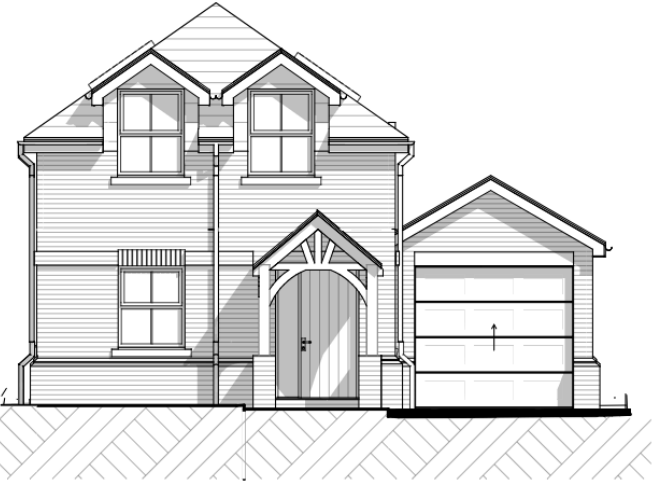


House Type 2 - NORTH ELEVATION

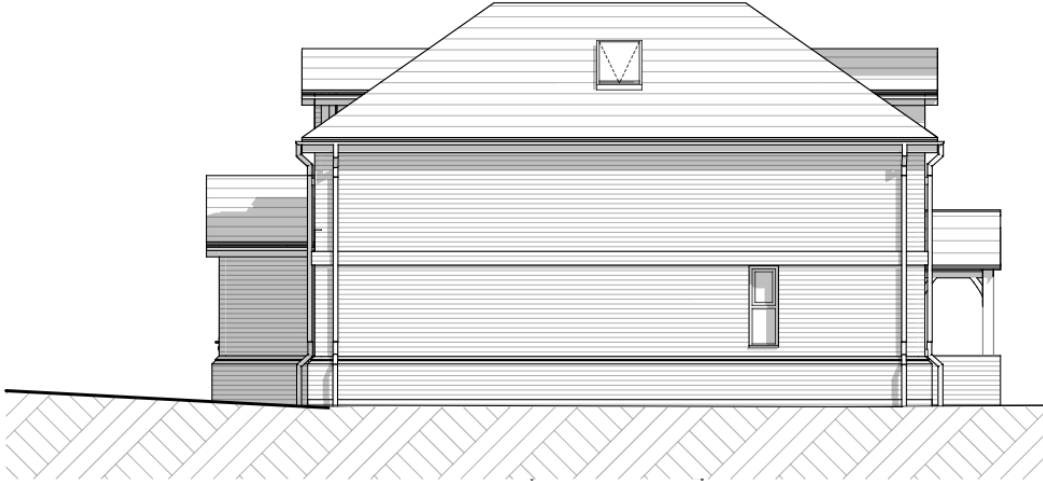
Plot 3 Floor Plans



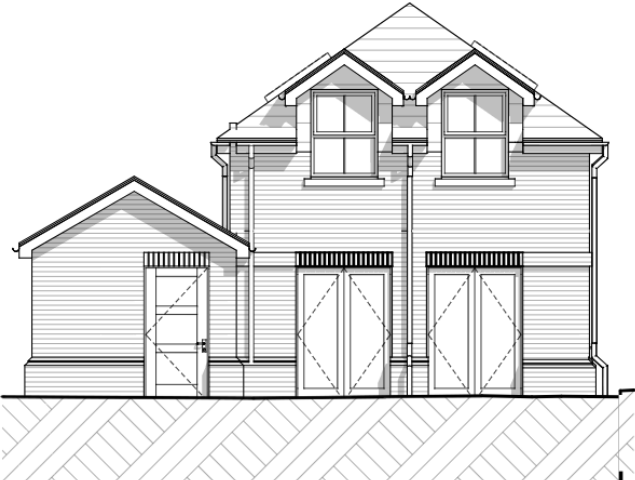
Plot 4 elevations



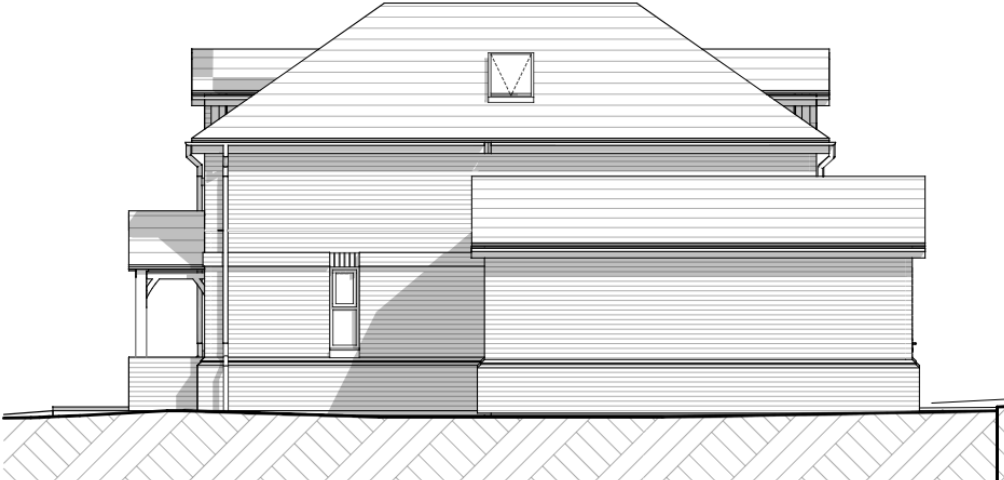
House Type 3 - EAST ELEVATION Elevation



House Type 3 - SOUTH ELEVATION Elevation

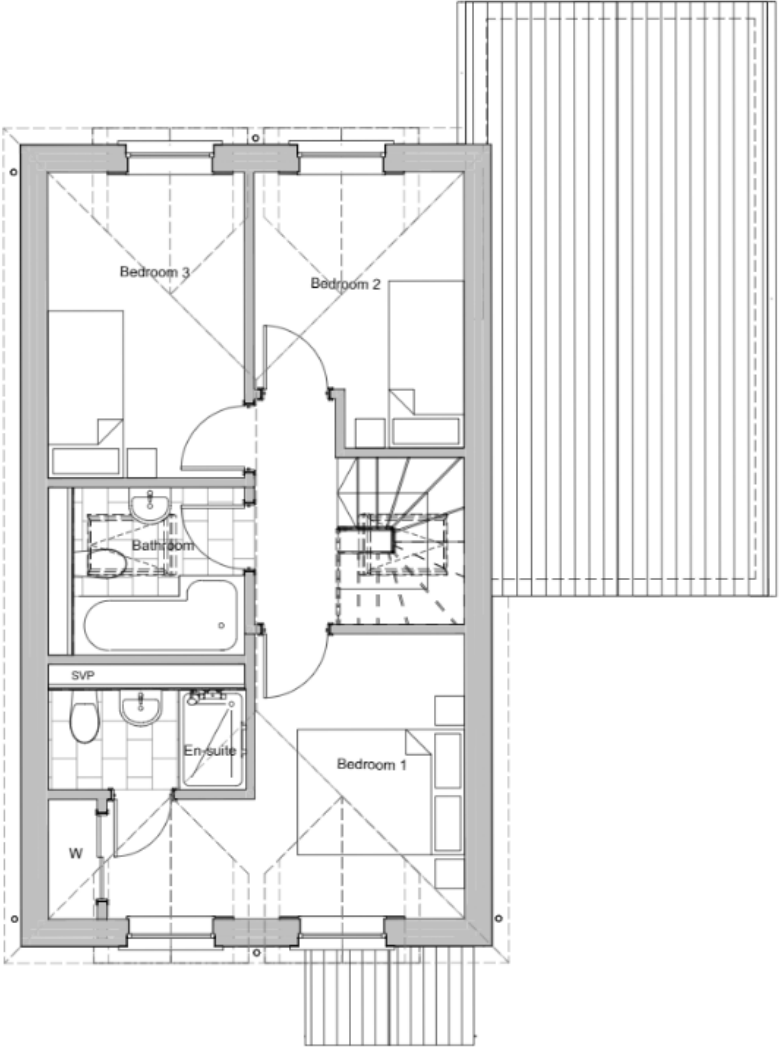
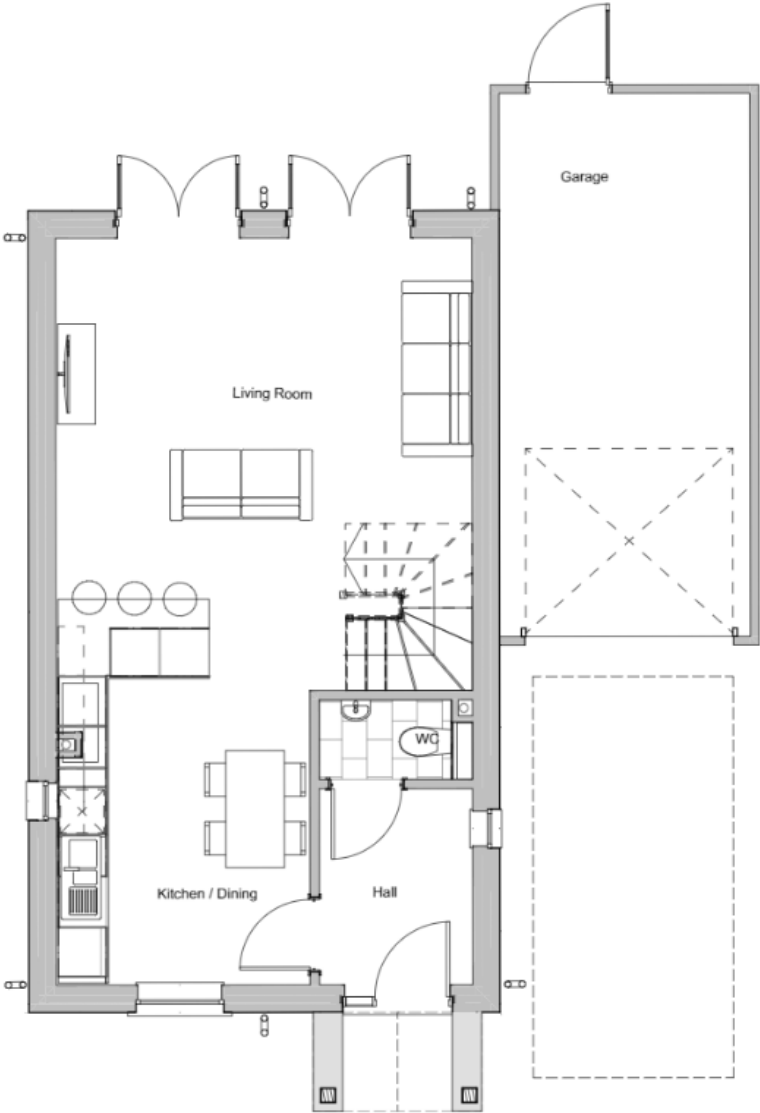


House Type 3 - WEST ELEVATION Elevation

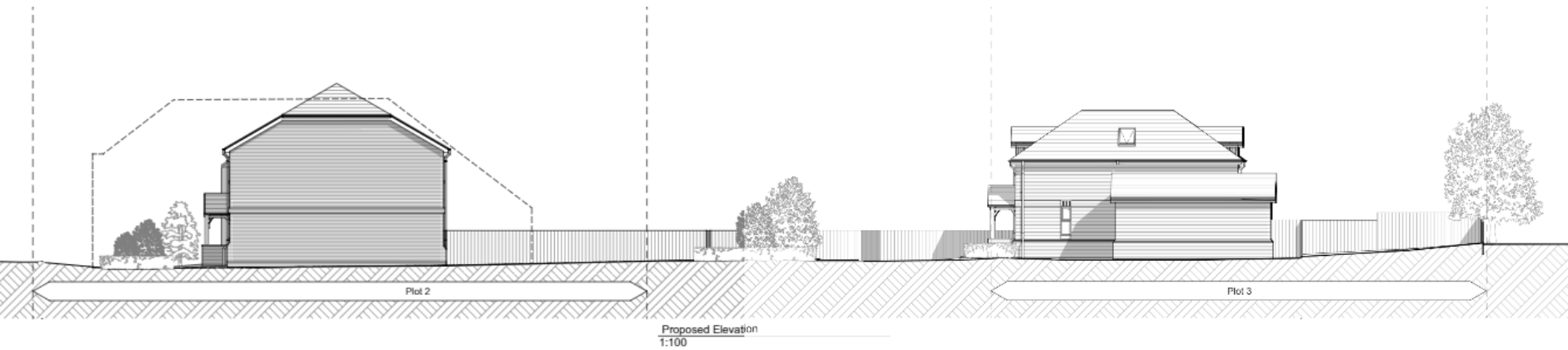
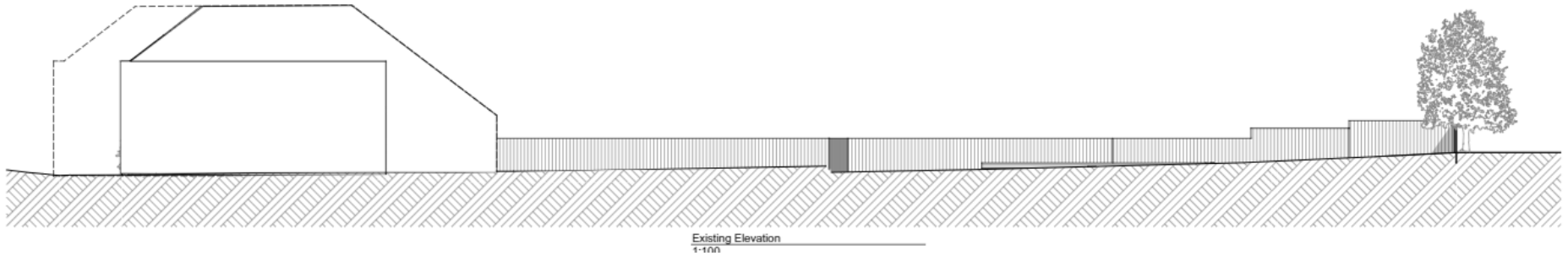


House Type 3 - NORTH ELEVATION Elevation

Plot 4 Floor Plans



Section through the site





View from
Winchester Road





View from rear of
the existing
building to the
neighbouring
properties





View from approximately
location of
access/parking court
toward neighbour to
the north



View looking south
toward Bull Lane

RECOMMENDATION - APPROVE

Proposal complies with Local Plan policies as is laid out within the report.